



ICHOM

2017 CONFERENCE

Marriott Marquis Washington, DC
October 25 - 26, 2017



<http://conference2017.ichom.org/>

KEYNOTE SPEAKERS

Christina Rångemark Åkerman, MD, PhD, President, ICHOM

Jeffrey R. Balsler, MD, PhD, President and Chief Executive Officer, Vanderbilt University Medical Center

Ben Harder, Managing Editor and Chief, Health Analysis, US News & World Report

Stefan James, MD, PhD, Senior Interventional Cardiologist, Uppsala University Hospital, Sweden

Paul G. Kluetz, MD, Acting Associate Director, Patient Outcomes, Oncology Center of Excellence, US Food and Drug Administration

Tessa Kowaliw, Health Consumer Advocate and Educator

Stefan Larsson, MD, PhD, Co-Founder and Board Member, ICHOM

Thomas H. Lee, MD, Chief Medical Officer, Press Ganey

Michael E. Porter, PhD, Bishop William Lawrence University Professor, Harvard Business School

Stefano Scarpetta, Director, Employment, Labour and Social Affairs, OECD

Peter Tollman, PhD, MBA, Senior Partner, Managing Director, The Boston Consulting Group

Bas van den Dungen, Director General, Ministry of Health, Welfare and Sport, The Netherlands

**Register by August 25, 2017
For early bird registration discount**

FEATURING PLENARY SESSIONS

Michael Porter Keynote

ICHOM Global Update

Patient, Provider and Media Perspectives
Policy, Research and Industry Perspectives

Peter Tollman Keynote

Bas van den Dungen Keynote

Christina Rångemark Åkerman
Closing Remarks

CONCURRENT TRACK SESSIONS

CLINICAL CARE TRACK

- Patients as Advocates for Change
- Driving Clinical Change and Quality Improvement
- Value-Based Care in the Community Setting

TECHNICAL AND OPERATIONAL TRACK

- Data Capture and IT Integration
- Outcome and Analytics: Informing Clinicians and Improving Care
- Driving Value through Collaboration

PAYMENT AND POLICY TRACK

- Linking Costs and Outcomes
- Purchasing High-Value Health Care
- System-Level Strategies for VBHC

MEASUREMENT COMMUNITY TRACK

- Patient-Reported Outcomes (PROMs)
- Patient Experience in VBHC Context
- PROs for Performance Measurement and Accountability

RESEARCH AND INDUSTRY TRACK

- Regulatory/Health Technology Assessment
- Leveraging Data from Clinical Practice
- Industry approaches to VBHC

CONTINUING EDUCATION CREDITS

ACCOUNTING PROFESSIONALS:
Approved for up to 9.0 NASBA CPE credits.

PHYSICIANS: Approval for 10.0 AMA
PRA Category 1 Credits.

HEALTH CARE EXECUTIVES: Pending approval for
ACHE continuing education credits.


**A HYBRID CONFERENCE
& INTERNET EVENT**

Global Progress on the Value Agenda

Globally, value-based health care (VBHC) is transforming practice and informing both payment and policy. As innovative organizations from across the health sector unite around a common aim of optimizing outcomes for patients, each has come to understand the respective role they must play in driving the value agenda.

With this in mind, we invite you to join health system leaders from around the world for the 2017 ICHOM Conference, where we will discuss progress and perspectives on value, with overarching plenaries from international experts and breakout sessions targeting topics critical to enabling and accelerating the shift to value-based health care.

ABOUT ICHOM:

 **ICHOM** The International Consortium for Health Outcomes Measurement's (ICHOM's) mission is to unlock the potential of value-based health care by defining global Standard Sets of outcome measures that really matter to patients for the most relevant medical conditions and by driving adoption and reporting of these measures worldwide. ICHOM's approach is built on a solid framework developed at Harvard Business School by Professors Michael E. Porter and Elizabeth O. Teisberg. In 2006, Porter and Teisberg wrote the well-known book, *Redefining Health Care*, which outlines the argument for using health outcomes data to redefine the nature of competition in health care. The ICHOM team is redefining what success in health care looks like - by focusing on health outcomes. After all, that's what matters most to patients. We're also bringing together experts and patients from around the world to help us define these outcomes.

Why? Because health problems are similar globally, but the way we handle them can be different. We have an opportunity to compare outcomes internationally and learn from physicians in other nations. For example, back pain in the United States is similar to back pain in India, but physicians in these two countries treat it very differently.

From 2016 — A Sampling of Attendees:

Chief Executive Officer
Chief Operating Officer
Professor
Medical Director
Head of Market Access
Chief Information Officer
Chief Medical Information Officer

Physician
Director of Quality and Patient Safety
VP Digital Healthcare
Senior Advisor
Principal
Head of Clinical Integration
Healthcare Data Analyst

Head of External Affairs
Head of Health Economics and Market Access
Global Government Affairs Manager
Value Solutions Manager
Chief Quality Officer
Clinical Performance Specialist

CO-SPONSORS



MEDIA PARTNERS



PARTICIPATION OPTIONS

Traditional Onsite Attendance

Simply register, travel to the conference city and attend in person.

PROS: subject matter immersion; professional networking opportunities; faculty interaction.



Onsite

Live and Archived Internet Attendance

Watch the conference in live streaming video over the Internet and at your convenience at any time 24/7 for six months following the event.

The archived conference includes speaker videos and coordinated PowerPoint presentations.

PROS: Live digital feed and 24/7 Internet access for the next six months; accessible in the office, at home or anywhere worldwide with Internet access; avoid travel expense and hassle; no time away from the office.



At your office . . .



. . . or home

EXHIBIT AND SPONSORSHIP OPPORTUNITIES:

Take advantage of this unique opportunity to expand your reach! The Conference is attended by highly influential and experienced professionals. Sponsorship offers you strategic positioning as an industry leader. For more information call 206-673-4815 or email exhibits@hconferences.com.

KEYNOTE SPEAKERS



CHRISTINA RÅNGEMARK ÅKERMAN, MD, PhD, *ICHOM President Boston, MA*



STEFAN LARSSON, MD, PhD, *Co-Founder, ICHOM, Stockholm, Sweden*



JEFFREY R. BALSER, MD, PhD, *President and CEO, Vanderbilt University Medical Center, Nashville, TN*



THOMAS H. LEE, MD, *Chief Medical Officer, Press Ganey Associates, Boston, MA*



BEN HARDER, *Managing Editor and Chief, Health Analysis, US News & World Report, Washington, DC*



MICHAEL E. PORTER, PhD, *Professor, Author and Global Thought Leader, Cambridge, MA*



STEFAN JAMES, MD, PhD, *Director, Uppsala Clinical Research Center, Uppsala, Sweden*



STEFANO SCARPETTA, *Director, Employment, Labour and Social Affairs, OECD, Paris, France*



PAUL G. KLUETZ, MD, *Acting Associate Director, Patient Outcomes, Oncology Center of Excellence, FDA, Silver Spring, MD*



PETER TOLLMAN, PhD, MBA, *Senior Partner, Managing Director and BCG Fellow, BCG, Boston, MA*



TESSA KOWALIW, *Health Consumer Advocate and Educator, Adelaide, Australia*



BAS VAN DEN DUNGEN, *Director General, Ministry of Health, Welfare and Sport, The Netherlands*

SESSION CHAIRS



HELEN BURSTIN, MD, MPH, FACP, *Chief Scientific Officer, National Quality Forum, Washington, DC*



DAVID LANSKY, PhD, *President/CEO, PBGH, San Francisco, CA*



ELIZABETH TEISBERG, PhD, *Exec. Director, Value Institute for Health & Care, Dell Medical School, University of Texas, Austin, TX*



DAVID CELLA, PhD, *Prof. and Chair, Dept. of Medical Social Sciences, Northwestern University, Chicago, IL*



ROBERT MAKUCH, PhD, *Director, Regulatory Affairs Track, Yale School of Public Health, New Haven, CT*



SEANTUNIS, MD, MSC, *President/CEO, Center for Medical Technology Policy, Baltimore, MD*



PIETER DE BEY, *Principal, BCG, New York, NY*



CHARLOTTE ROBERTS, *MBBS, BSC, VP Standardisation, ICHOM, London, UK*



DAVID WILLIAMS, BDS, MSc, PhD, *Prof. of Global Oral Health, Lead for International Partnerships, Barts/ London School of Medicine & Dentistry, London, UK*



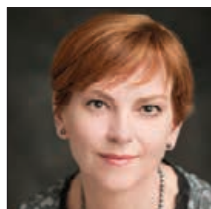
ANDRE DIAS, *Project Leader, BCG and previous ICHOM VP Benchmarking and Strategy, Toronto, Canada*



SUSANT. SHERRY, *Deputy Director, Community Catalyst, Boston, MA*



PAULA WILLIAMSON, *PhD, Professor, Head of Dept. of Biostatistics, University of Liverpool, Liverpool, UK*



JENNIFER GRIGGS, MD, *Prof., Dept. of Medicine, Division of Hematology/Oncology, Ann Arbor, MI*



CALEB STOWELL, MD, *Enterprise Director, Value Based Care, Providence Health and Services, Renton, WA*

Day 1 • Wednesday, October 25

7:00 am **Registration/Exhibition Hall**

8:30 am **Opening Remarks**

8:45 am **Day 1 Opening Plenary**
Michael E. Porter, PhD, Professor, author, and global thought leader on value-based health care

9:45 am **Stakeholder Perspectives: Patient, Provider, and Media**
Patient Perspective - Tessa Kowaliw, Health Consumer Advocate and Educator, One Mother to Another
Provider Perspective - Jeffrey R. Balsler, MD, PhD, President and Chief Executive Officer, Vanderbilt University Medical Center
Media Perspective - Ben Harder, Managing Editor and Chief, Health Analysis, US News & World Report
Moderator: Thomas H. Lee, MD, Chief Medical Officer, Press Ganey

11:00 am **Networking Break in the Exhibit Hall**

11:30 am **Breakout Session Block 1**
Clinical Care Track: Patients as Advocates for Change
Session Chair: Susan T. Sherry, Deputy Director, Community Catalyst

Technical and Operational Track: Data Capture and IT Integration
Session Chair: Pending

Payment and Policy Track: Linking Costs and Outcomes: The Full Value Equation
Session Chair: Pieter de Bey, Principal, BCG

Measurement Community Track: Patient-Reported Outcome Measures (PROMs)
Session Chair: David Cella, PhD, Professor and Chair, Department of Medical Social Sciences, Northwestern University

Research and Industry Track: Regulatory/Health Technology Assessment
Session Chair: Sean Tunis, MD, President and Chief Executive Officer, Center for Medical Technology Policy

12:45 pm **Lunch/Exhibition Hall**

2:30 pm **Breakout Session Block 2**
Clinical Care Track: Driving Clinical Change and Quality Improvement

Session Chair: Jennifer Griggs, MD, Professor, Department of Medicine, Division of Hematology/Oncology, Department of Health Management and Policy, University of Michigan

Technical and Operational Track: Outcomes and Analytics: Informing Clinicians and Improving Care
Session Chair: Dr. Caleb Stowell, Enterprise Director, Value Based Care at Providence Health & Services

Payment and Policy Track: Purchasing High-Value Health Care
Session Chair: David Lansky, PhD, President and Chief Executive Officer, Pacific Business Group on Health (PBGH)

Measurement Community Track: Patient Experience in the VBHC Context
Session Chair: Elizabeth Teisberg, PhD, Executive Director, Value Institute for Health and Care, Dell Medical School, The University of Texas at Austin

Research and Industry Track: Leveraging Data from Clinical Practice for Research and Regulatory
Session Chair: Paula Williamson, PhD, Professor of Medical Statistics and Director of the MRC North West Hub for Trials Methodology Research; Director, Clinical Trials Research Centre (CTRC); Head of the Department of Biostatistics, University of Liverpool, Liverpool, United Kingdom

3:45 pm **Transition Break**

4:00 pm **Day 1 Closing Plenary**
VBHC: Peter Tollman, PhD, MBA, Senior Partner, Managing Director and BCG Fellow, The Boston Consulting Group

5:00 pm **Adjournment and Networking Reception**

Watch Our Website for Information
on the Conference App:
<http://conference2017.ichom.org>

Day 2 • Thursday, October 26

7:00 am **Registration / Exhibition Hall**

8:00 am **Day 2 Welcome**

8:15 am **Stakeholder Perspectives: Policy, Research, and Industry**

Policy Perspective - Stefano Scarpetta, PhD, Director, Employment, Labour and Social Affairs, OECD

Research Perspective - Stefan James, Professor of Cardiology and Director, Uppsala Clinical Research Center

Regulatory Perspective - Paul G. Kluetz, MD, Acting Associate Director, Patient Outcomes, Oncology Center of Excellence, US Food and Drug Administration

Moderator: Stefan Larsson, MD, PhD, Co-Founder and Board Member, ICHOM

9:30 am **Break**

9:45 am **Breakout Session Block 3**

Clinical Care Track: Value-Based Care in the Community Setting

Session Chair: Professor David Williams, BDS, MSc, PhD, FRCPath, FDS RCS, Professor of Global Oral Health, Lead for International Partnerships, Barts and The London School of Medicine and Dentistry

Technical and Operational Track: Driving Value through Collaboration

Session Chair: Dr. Andre Dias, Project Leader, BCG and previous ICHOM VP Benchmarking and Strategy

Payment and Policy Track: System Level Strategies for Achieving VBHC: The Netherlands Experience

Session Chair: Charlotte Roberts, MBBS, BSC, VP Standardisation, ICHOM

Measurement Community Track: PROs for Performance Measurement and Accountability

Session Chair: Helen Burstin, Chief Scientific Officer, National Quality Forum

Research and Industry Track: Industry approaches to Value-Based Health Care

Session Chair: Robert Makuch, PhD, Director, Regulatory Affairs Track, Yale School of Public Health

11:00 am **Break**

11:15 am **Day 2 Closing Plenary**

Bas van den Dungen, Director General, Ministry of Health, Welfare and Sport, The Netherlands

Others to be announced

12:30 pm **Closing Remarks**

Christina Rångemark Åkerman, MD, PhD, ICHOM President

Hotel/Travel Information

The Marriott Marquis, Washington DC is the official hotel for the ICHOM Conference. A special group rate of **\$299.00 single/double** per night (plus applicable taxes) has been arranged for Summit Attendees.

A dedicated website is now available for you to make or modify your group-rate reservations at <http://conference2017.ichom.org/>

You may also make your reservations directly with Marriott Reservations by calling **1-800-228-9290** and requesting the ICHOM group rate.

Reservations at the group rate will be accepted while rooms are available or until the cut-off date of **Wednesday, September 27, 2017**. After this date, reservations will be accepted on a space-available basis at the prevailing rate.

MARRIOTT MARQUIS

901 Massachusetts Ave NW • Washington, DC 20001 USA

Standardisation



449

WORKING GROUP MEMBERS FROM 45 COUNTRIES HAVE DEVELOPED 21 STANDARD SETS

10

STANDARD SETS ARE IN PROGRESS

Implementation



18

STANDARD SETS ARE BEING IMPLEMENTED IN REGISTRIES AND HOSPITALS

600+

SITES ACROSS 23 COUNTRIES ARE IMPLEMENTING OUR STANDARD SETS

Benchmarking



3

STANDARD SETS ARE BEING PILOTED IN THE BENCHMARKING PROCESS

75

HOSPITALS OR REGISTRIES ACROSS 10 COUNTRIES ARE INVOLVED IN THE PILOTS

TO FIND OUT MORE ABOUT ICHOM'S WORK, PLEASE VISIT US AT

[HTTP://WWW.ICHOM.ORG/CONTACT/](http://www.ichom.org/contact/)



REGISTRATION RATES

	Early I August 25	Early II September 22	Standard - After September 22
Standard Rate	\$895	\$1,095	\$1,195
Government Rate <i>"Government" shall apply to individuals who are full time employees of federal, state or local regulatory agencies (i.e., state university health system or local public hospital is a provider, not government)</i>	\$825	\$995	\$1,095
Group Registration <i>Five or more registrations submitted from the same organization receive the discounted rates for conference registration. To qualify, all registrations must be submitted at the same time.</i>	\$825 each	\$995 each	\$1,095 each
Webcast Registration <i>Webcast conference registration includes the live Internet feed from the Conference, plus six months of continued archived Internet access.</i>	\$795	\$895	\$995
Webcast Group Registration <i>Webcast conference registration includes the live Internet feed from the Conference, plus six months of continued archived Internet access.</i> <i>See INTELLECTUAL PROPERTY POLICY, under Terms and Conditions on website.</i>	5 or more: \$595 each 10 or more: \$495 each 20 or more: \$395 each 40 or more: \$295 each		
Conference Electronic Media: <i>Following the Conference, the video and presentations are made available in the following formats. To take advantage of these discounted prices, you must reserve media WITH your Conference registration.</i> <i>All Webcast attendees automatically receive 6 months access on web.</i> <i>Note that conference electronic media may be used by the individual purchaser only. Terms and Conditions apply (see website).</i>		Flash Drive (\$129 + \$15 shipping): \$ 144 6 months' access on Web: \$129	

OTHER INFORMATION

For Registration Questions: Phone: 800-684-4549 (Continental US, Alaska and Hawaii only) or 206-629-2350

Email: registration@hcconferences.com
(registration is not available by phone or email)

METHOD OF PAYMENT FOR TUITION

Make payment by check (to Health Care Conference Admin, LLC); MasterCard, Visa or American Express; or by wire transfer (bank information will be emailed). A \$30 fee will be charged on any returned checks. Groups: Have registration and credit card information for each person. List all group members on FAX cover sheet.

CANCELLATIONS/SUBSTITUTIONS

For onsite registrants, we offer the below monetary refund policy. You may also send a substitute or transfer your onsite registration to webcast participation at no charge. For webcast registrants, no refunds will be given.

By August 25: Full refund, less \$95 processing fee

By September 22: 50% refund

After September 22: No Refund

INTELLECTUAL PROPERTY POLICY

Unauthorized sharing of Conference content via Internet access through the sharing of user names and passwords or via alternative media (Flash Drive) through the sharing of said media is restricted by law and may subject the copyright infringer to substantial civil damages. The Conference aggressively pursues copyright infringers.

If a registrant needs the ability to share Conference content within his or her organization, multiple registrations are available at discounted rates.

The Conference will pay a reward for information regarding unauthorized sharing of Conference content. The reward will be one quarter (25%) of any recovery resulting from a copyright infringement (less legal fees and other expenses related to the recovery) up to a maximum reward payment of \$25,000. The payment will be made to the individual or individuals who in the opinion of our legal counsel first provided the factual information, which was necessary for the recovery. If you have knowledge regarding the unauthorized Conference content sharing, contact the Conference registration office.

TERMS AND CONDITIONS

The Conference program is subject to change. An executed registration form constitutes binding agreement between the parties.

ICHOM CONFERENCE CONTINUING EDUCATION CREDITS

NASBA

Health Care Conference Administrators, LLC (dba GHC, LLC Healthcare) is registered with the National Association of State Boards of Accountancy (NASBA) as a sponsor of continuing professional education on the National Registry of CPE Sponsors. State boards of accountancy have final authority on the acceptance of individual courses for CPE credit.

Complaints regarding registered sponsors may be submitted to the National Registry of CPE Sponsors through its website: www.learningmarket.org. A recommended maximum of 9.00 credits based on a 50-minute hour will be granted for the entire learning activity.

This program addresses topics that are of a current concern in the healthcare quality and patient safety environment. This is an update, group-live activity. For more information regarding administrative policies such as complaints or refunds, call 206-757-8053 or email petergrant@ehcca.com.

AMA PRA CATEGORY 1 CREDITS™

Accreditation Statement

This activity has been planned and implemented in accordance with the accreditation requirements and policies of the Accreditation Council for Continuing Medical Education (ACCME) through the joint providership of Amedco and the Health Care Conference Administrators (HCCA). Amedco is accredited by the ACCME to provide continuing medical education for physicians.

Credit Designation Statement

Amedco designates this live activity for a maximum of 10.0 AMA PRA Category 1 Credits™. Physicians should claim only the credit commensurate with the extent of their participation in the activity.

HEALTH CARE EXECUTIVES

Pending approval for ACHE continuing education credits

CERTIFICATE OF ATTENDANCE

Onsite attendees can also request a Certificate of Attendance which they can file with appropriate entities for credit, and webcast attendees can request a Webcast Certificate of Attendance on which they can certify the number of hours they watched and can file with appropriate entities for credit.

HOW TO REGISTER: Fully complete the form on page 7 (one form per registrant, photocopies acceptable). Payment must accompany each registration (U.S. funds, payable to Health Care Conference Administrators, LLC).

ONLINE: Secure online registration at <http://conference2017.ichom.org/register/>.

FAX: 206-319-5303 (include credit card information with registration)

MAIL: Conference Office, 12330 NE 8th Street, Suite 101, Bellevue, WA 98005-3187

FOR REGISTRATION QUESTIONS:

PHONE: 800-684-4549 (Continental US, Alaska and Hawaii only) or

206-629-2350, Monday-Friday, 7 AM - 5 PM PST

E-MAIL: registration@hcconferences.com

ICHOM 2017 CONFERENCE

COMPLETE THE FOLLOWING. PLEASE PRINT CLEARLY:

Mr. Ms. Dr.

NAME	ADDRESS
NAME TO APPEAR ON YOUR BADGE	CITY/STATE/ZIP
JOB TITLE	COUNTRY
ORGANIZATION	TELEPHONE
	E-MAIL
	<input type="checkbox"/> SPECIAL NEEDS (DIETARY OR PHYSICAL)
	HOW DID YOU HEAR ABOUT US?
	CONDITION YOU ARE MOST INTERESTED IN

ONSITE CONFERENCE ATTENDANCE

CONFERENCE:

Standard Rate:

- Through Friday, August 25, 2017* \$ 895
- Through Friday, September 22, 2017** \$1,095
- After Friday, September 22, 2017 \$1,195

Government Employee Rate:

- Through Friday, August 25, 2017* \$ 825
- Through Friday, September 22, 2017** \$ 995
- After Friday, September 22, 2017 \$1,095

GROUP REGISTRATION DISCOUNT:

Five or more registrations submitted from the same organization at the same time receive the following discounted rates for conference registration only. To qualify, all registrations must be submitted simultaneously:

Standard Group Rate (For each registrant):

- Through Friday, August 25, 2017* \$ 825
- Through Friday, September 22, 2017** \$ 995
- After Friday, September 22, 2017 \$1,095

CONFERENCE ELECTRONIC MEDIA:

Onsite Attendees — Following the Conference, the video and presentations are made available in the following formats. To take advantage of the discounted prices below, you must reserve media WITH your Summit registration:

- Flash Drive (\$129 + \$15 shipping) \$ 144
- 6 months' access on Web \$129

Note that conference electronic media may be used by the individual purchaser only. Terms and Conditions apply (see page 6).

SPECIAL SUBSCRIPTION OFFERS – ONSITE AND WEBCAST ATTENDEES:

You can purchase an annual subscription to *Accountable Care News*, *Medical Home News*, *Population Health News*, *Predictive Modeling News* or *Readmissions News* for only \$295 (regular rate \$468) and an annual subscription to *Value Based Payment News* or *Healthcare Innovation News* for only \$195 (regular rate \$295) when ordered with your conference registration.

- | | |
|---|---|
| <input type="checkbox"/> <i>Accountable Care News</i> \$ 295 | <input type="checkbox"/> <i>Population Health News</i> \$ 295 |
| <input type="checkbox"/> <i>Medical Home News</i> \$ 295 | <input type="checkbox"/> <i>Predictive Modeling News</i> \$ 295 |
| <input type="checkbox"/> <i>Readmissions News</i> \$ 295 | |
| <input type="checkbox"/> <i>Healthcare Innovation News</i> \$ 195 | <input type="checkbox"/> <i>Value Based Payment News</i> \$ 195 |

PAYMENT

The use of a registration discount code cannot be the basis of requesting a partial refund of fees already paid.

TOTAL FOR ALL OPTIONS, ONSITE OR WEBCAST:

Discount Code:

Please enclose payment with your registration and return it to the ICHOM Conference Registrar, 12330 NE 8th Street, Suite 101, Bellevue, WA 98005-3187, or fax your credit card payment to 206-319-5303.

You may also register online at <http://conference2017.ichom.org/register/>.

- Check/money order enclosed (payable to Health Care Conference Administrators LLC)
- Payment by credit card: American Express Visa Mastercard
- Pay By Wire Transfer (bank information will be emailed)

If a credit card number is being given to hold registration only until such time as a check is received it must be so noted. If payment is not received by seven days prior to the Conference, the credit card payment will be processed. Credit card charges will be listed on your statement as payment to HealthCare (HC) Conf LLC.

ADDRESS
CITY/STATE/ZIP
COUNTRY
TELEPHONE
E-MAIL
<input type="checkbox"/> SPECIAL NEEDS (DIETARY OR PHYSICAL)
HOW DID YOU HEAR ABOUT US?
CONDITION YOU ARE MOST INTERESTED IN

WEBCAST CONFERENCE ATTENDANCE

Webcast participation includes the live Internet feed from the conference as well as six months of continued archived Internet access, available 24/7 for one person

CONFERENCE:

Standard Rate:

- Through Friday, August 25, 2017* \$ 795
- Through Friday, September 22, 2017** \$ 895
- After Friday, September 22, 2017 \$ 995

GROUP REGISTRATION:

Group registration offers the substantial volume discounts set forth below.

Group registration offers the possibility of implementing an online training program. Group registration permits the organizational knowledge coordinator either to share conference access with colleagues or to assign and track employee conference participation. Certificate of successful completion of online post conference examination evidences mastery of conference body of knowledge. Rates are per person.

- Conference Access: 5 or more \$595 per person 10 or more \$495 per person
 20 or more \$395 per person 40 or more \$295 per person

See INTELLECTUAL PROPERTY POLICY, page 6.

CONFERENCE ELECTRONIC MEDIA:

Webcast attendees — Following the Conference, the video and presentations are made available on a flash drive. To take advantage of the discounted price below, you must reserve media WITH your Conference registration:

- Flash Drive (\$129 + \$15 shipping) \$ 144

(All webcast attendees automatically receive 6 months access on web.)

* This price reflects a discount for registration and payment received through Friday, August 25, 2017.

** This price reflects a discount for registration and payment received through Friday, September 22, 2017.

REGISTRATION BINDING AGREEMENT

Registration (whether online or by this form) constitutes a contract and all of these terms and conditions are binding on the parties. In particular, these terms and conditions shall apply in the case of any credit/debit card dispute. For webcast and onsite registrants there will be no refunds for "no-shows" or cancellations.

ACCOUNT #	
EXPIRATION DATE	SECURITY CODE
NAME OF CARDHOLDER	
SIGNATURE OF CARDHOLDER	

ICHOM Conference

Publications Printing Dept.
41651 Corporate Way
Palm Desert, CA 92260
USA

(Address for Return Mail Only)

PRESORTED
FIRST CLASS
U.S. POSTAGE
PAID
PERMIT # 1
PALM DESERT, CA

**A HYBRID CONFERENCE
& INTERNET EVENT**



ICHOM

2017 CONFERENCE

Marriott Marquis Washington, DC
October 25 - 26, 2017

<http://conference2017.ichom.org/>

**A HYBRID CONFERENCE
& INTERNET EVENT**